

# Annual Report Connections



Volume 35, April 2021

[www.CarePartnersTexas.org](http://www.CarePartnersTexas.org)

## FROM THE INTERIM PRESIDENT

I am privileged to once again serve as Interim President of CarePartners. My journey with this amazing organization began 31 years ago and our mission to provide support, education, resources and respite to family caregivers and quality no cost care to those individuals living with memory loss, Alzheimer's or other challenges of aging continues to inspire me. This past year was incredibly challenging due to the pandemic. However, we never wavered from our primary mission to connect and engage with volunteers, caregivers and their loved ones to provide hope, education and support. The lifeforce of our organization remains in our commitment to our partnerships. These partnerships are many: the families who grant us the honor to walk alongside them in their journey of caregiving or illness, the congregations and nonprofits who sponsor one or more of our programs, the tireless and dedicated teams of volunteers who so compassionately serve, the members of our Board of Directors who guide us in leadership and our generous donors who support us so that we may continue to fulfill our mission and vision.

**Despite the impact Coronavirus had on our organization, community and the world around us, we take a moment to appreciate what we have accomplished in 2020. With your help and support, 1,769 volunteers participated in serving 2,557 caregivers and their loved ones. Approximately 52,800 hours of care, respite and education were donated which represents a value exceeding \$1.44 million in free support and services. We are truly grateful to all of you as you are the reason for our success.**

Although we see a glimmer of hope with vaccinations and lower infection rates, the pandemic isn't over yet and our work to restart programs and safely rebuild our network still lies ahead throughout 2021. We look forward with excitement to once again be together in person and reconnect with all of you. Together, we have a bright future and we will embrace the challenges and changes that inevitably come our way.

With appreciation,

A handwritten signature in blue ink that reads "Tom Breaux".

**TOMMY BREAUX, M.S.**  
Interim President, CarePartners

### OUR MISSION:

**TO PROVIDE SUPPORT,  
EDUCATION AND RESOURCES  
TO CAREGIVERS AND QUALITY  
CARE FOR THOSE LIVING WITH  
MEMORY LOSS AND OTHER  
CHALLENGES OF AGING.**

## FROM THE BOARD CHAIR

Our devoted staff, generous donors, partners, and our wonderful volunteers have worked together to continue our mission to provide support, education and resources to caregivers and quality care to those living with memory loss and the other challenges of aging.

Remaining connected to volunteers and clients during the pandemic was crucial to our interim and online programs. This connection included 6,175 client contacts through calls, handwritten cards, care kit deliveries, online Common Ground support groups, drive-through Gatherings, Gathering Parades, Gathering @ Your Place programs and online education. Virtual Caregiver education included 76 workshops and 72 Hot Topic sessions, most of which are still available to view on our website.

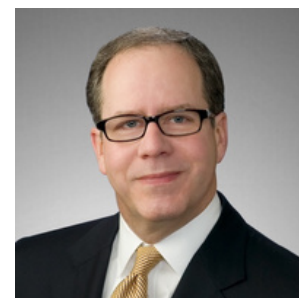
Despite this unusual year, the Board and I are very grateful for so many who have creatively adapted our programs to remain focused on our mission during the pandemic. Our volunteers continue to be the lifeblood of CarePartners. Their creativity, enthusiasm, and willingness to serve is inspiring. We know how much our caregivers depend on our in person programming and we, like them, look forward to opportunities to resume some form of face-to-face programs in 2021.

Kind regards,



**DAVID JEWELL**

Chairman of the Board, CarePartners



## THE IMPACT OF COVID19

March 2020 and the advent of the COVID19 pandemic changed everything for our volunteers, caregivers their loved ones.

In a recent survey, **96% of caregivers stated they were impacted as a result of the Coronavirus** related closures, stay at home orders and other related events since the pandemic began, both positively and negatively. The most impactful loss at this time for both caregiver and care partner has been the inability to participate in the Gathering Place program. Caregivers marked an increase in fear and isolation (43%), stress (61%), and were feeling overwhelmed and fatigued (26%+). Those that they are caring for express the same levels of negative impact, as well as an increase in their abilities to complete activities of daily living (30%) due to the impacts of the pandemic.

But our volunteers responded! **70% of volunteers who responded participated in CarePartners Interim Programming** during the pandemic, almost all of them have done so multiple times. 13% of volunteers have served in this program over 10 times in the last year! As always, we are grateful for their willingness to pivot and redefine how we serve.

*Thank you from CarePartners!*

## CAREPARTNERS' FOUR SIGNATURE PROGRAMS

These are traditional in person programs offered by CarePartners in partnership with congregations and nonprofits outside of the COVID pandemic. These programs were suspended in March 2020 and will resume as individual locations partner with CarePartners to determine when it is safe to do so.

**GATHERING PLACE** is a program for family caregivers caring for loved ones with memory loss, specifically mild to moderate Alzheimer's, dementia or cognitive impairment. This monthly 3-3.5 hour activity based program provides the caregiver respite, a break from caregiving responsibilities, while their loved one participates in planned activities such as games, music, crafts, lunch and socialization.



**COMMON GROUND** is a monthly support group offering emotional support, encouragement, friendship and helpful tips about self-care and caregiving. This program is co-led by an experienced facilitator and a caregiver who has been through the caregiving journey.

**SECOND FAMILY** is a home-based program that focuses on helping individuals living with illness or other challenges of aging by providing caregivers a break and companionship for their loved one.



**CAREGIVER EDUCATIONAL EVENTS** are conferences and workshops that provide family caregivers with education and community resources that equip them to take better care of themselves and their loved ones. Events are offered in full-day or half-day conference formats, single workshops, or corporate lunch and learns.



## CAREPARTNERS' INTERIM COVID PROGRAMMING

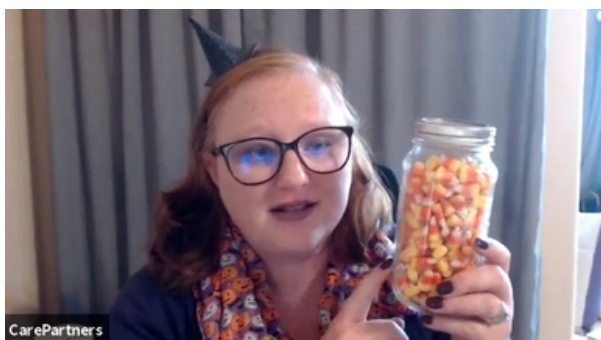
Following the March 2020 COVID shut down, CarePartners and our volunteers quickly reimagined how we might serve our caregivers in new, and safe, ways. While we look forward to reopening programming in 2021, we are incredibly proud of the perseverance and creativity of our staff and volunteers.

### Drive Thru Gathering

This is an event where caregivers and loved ones are invited to a location's parking lot or another outdoor location to drive thru various games, music, crafts, singing, and a visit or prayer. All of which is done with social distancing and masks since they never leave the car.

### Gathering at Your Place

This is a new expression of the Gathering Place program which takes place online via Zoom and includes activities for caregivers to do along with their loved ones while at home. These activities are led by our staff and volunteers every Wednesday from 10:30-11:15 a.m. and include many of the fun and engaging activities of our in-person Gatherings: Welcome, invocation, fitness, entertainment or music, games and closing.



### Weekly Gathering at Home and Activity Calendar Documents

These resources are available to view or print from home to help keep you and your loved one engaged and entertained at home with activities, crafts, games, recipes, and other resources.



### Gathering Parade

The Gathering Parade allows the volunteers to "parade" in front of the care partners' and caregivers' homes in a caravan of several cars to engage with them in person for a few minutes with social distancing, masks and other safety measures in place.



### Care Kit Deliveries

The purpose of the Care Kits is to distribute helpful items to caregivers and/or care partners as they face this time of isolation while bringing joy and hope. Care Kits can include items and activities for both the caregivers and their loved ones. When the kits are delivered by volunteers, there is an opportunity for a socially distanced porch visit to check in with clients and provide some socialization.

### Weekly Common Ground Tele-Conference

Held every week on Tuesday at 10:00 a.m, this is an opportunity for caregivers to connect with each other and our facilitators to find community, resources, and connection in this challenging caregiving journey.

### Online Education Events/Hot Topics

Our goal is to bring you educational, helpful and relevant information about how to better care for yourself as a caregiver, and your loved one with memory issues or other challenges of aging. Our Caregiver Education is offered through social media "Hot Topic" segments, online caregiver conferences and workshops.

## 2020 Financials

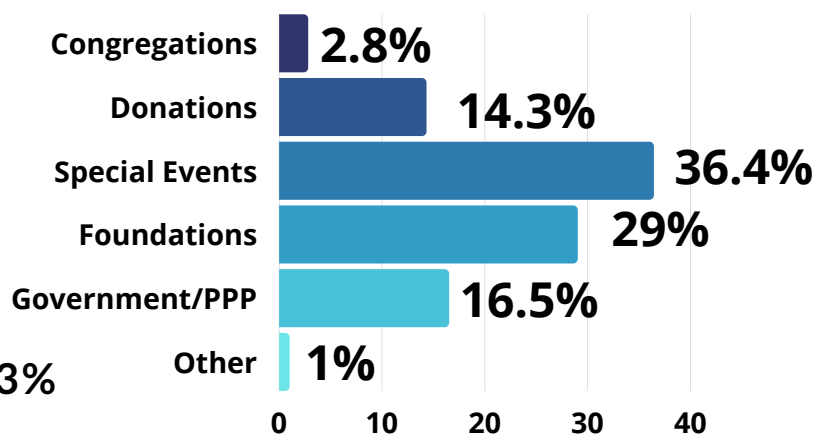
### OPERATING BUDGET 2020

Revenue - \$840,537

Expenses - \$843,012

Program Support - 87%

Administrative/Fundraising - 13%



## Thank You Donors

*The following donors sustained the mission of CarePartners through their generous gifts of \$2500+ made in 2020.*

DTE Energy Foundation  
 May & Stanley Smith Charitable Trust  
 Southwestern Energy  
 The George Foundation  
 Henderson-Wessendorff Foundation  
 William J. & Dorothy K. O'Neill Foundation  
 John P. McGovern Foundation  
 Marathon Oil Company  
 Albert & Ethel Herzstein Foundation  
 Millennium Pipeline Company, LLC  
 Josh and Amanda Weber  
 United Way of Greater Baytown Chambers  
 Richard and Judy Ebling

Waltrip Family Foundation  
 Steve Mueller  
 The Guild Shop of The Church of St. John the Divine  
 The Hildebrand Foundation  
 George & Mary Josephine Hamman Foundation  
 Joe and Cathy Cleary  
 David Watson  
 Memorial Drive Presbyterian Church  
 David Jewell  
 John Del Mixon  
 Frank Harrison  
 Garwin Freeze  
 Locke Lord, LLP  
 Memorial Hermann  
 Steven Hinchman  
 Vinson & Elkins, LLP

Gary Weber  
 Lispah Hogan  
 Houston Junior Forum  
 AARP  
 Jo Rothbauer  
 Mary Wagner  
 Chapelwood United Methodist Church Foundation  
 Mr. & Mrs. Thomas Smith  
 Deborah Nichols  
 Wright & Nancy Moody  
 Northwoods Presbyterian  
 ExxonMobil  
 Linda Lykos  
 Gregory B Larberg  
 Arch-Con Corporation  
 Harriet & Joe Foster Foundation  
 H-E-B, LP  
 Robert Baker

## 2020 RONALD H. SUNDERLAND AND PARTNERSHIP AWARD WINNERS

## Congregation Emanu El, Rabbi Hayon

**The CarePartners Partnership Award is presented to a partner who shares our mission and passion to serve family caregivers and their loved ones who suffer from memory loss or other challenges of aging.**

Congregation Emanu El has been associated with CarePartners since 1989 when the congregation launched an AIDS Care Team that served for over six years, serving twenty-two individuals with HIV/AIDS and donating nearly 10,000 hours of care. At the time, Emanu El, along with Congregation Brith Shalom, were the first two synagogues in Houston pioneering the Jewish response locally to those with HIV/AIDS.

The work of the congregation extended to CarePartners' Second Family Care Team, which Emanu El named it's Caring Congregation Committee. Over the years this team provided nearly 13,000 hours of assistance to homebound families and many more confined to hospitals and nursing homes.

In 2005, Emanu El became the first Jewish congregation to sponsor a Gathering Place Care Team as volunteers began hosting this monthly program designed for family caregivers caring for loved ones with memory loss. At the Gathering Place, caregivers receive respite, a break from their caregiving responsibilities, while their loved one participates in planned activities such as games, music, crafts, lunch and socialization. September 2020 marked the 15th Anniversary of the Gathering Place at Emanu El with members of the community serving 173 caregivers and their loved ones and donating 14,700 hours of care.

The 2020 Partnership Award was not the first recognition from CarePartners over the years. In 1997, Rabbi Roy Walter was presented the Founder's Award and in 2010, congregant Sandy Lusky received the Dr. Ronald H. Sunderland Care Team Member Award.

Congregation Emanu El is known for being a community leader when it comes to social action and welfare, both going out into the community and inviting the community in. The Gathering Place Care Team is not only committed to the monthly Gathering Place, a day guaranteed to be full of laughter, music, dancing and community but many of it's members have served as volunteers at CarePartners' special events and as speakers at our Caregiver Conferences and Workshops.

## Ann McIntire, Grace Presbyterian Church

**The Dr. Ronald H. Sunderland Volunteer of the Year Award is presented to a CarePartners Care Team® volunteer who embodies the remarkable spirit of service, compassion and care and is dedicated to our mission.**

Since 1997, Ann McIntire has volunteered her time with different programs offered by CarePartners. "My career was as a registered nurse, and when I retired in 1997, I was looking for a place where I could use my skills," McIntire said.

Ms. McIntire was an in-home health care nurse, so volunteering with CarePartners seemed right up her alley. She had found out that her church, Grace Presbyterian, had an Alzheimer's Care Team™ which assisted care partners (clients) in a variety of ways, including taking them to the grocery store, a doctor's appointment, or just helping them at home.

Three years later, McIntire helped establish a Gathering Place at Grace Presbyterian and has been in charge ever since. "It's an opportunity for the caregiver to go and do something for themselves," McIntire said.

Grace Presbyterian's Gathering Place takes place on the fourth Thursday of every month from 10 a.m. – 1:30 p.m. During that time, they also hold Common Ground, a support group for caregivers. "It's a totally rewarding and fun experience; to have fun with the folks who usually don't do anything at home but watch T.V.," McIntire said.

Volunteering brings such joy into McIntire's life; it also inspired her husband to begin volunteering after he retired. At first, her husband came to help with the sound machine, but now he's just as involved with the care partners (clients) and enjoys participating just as much as his wife.

"I've made some good friendships with other volunteers. I've had opportunities to get closer to a client's family," Ann McIntire said. "There are so many opportunities that go beyond what we do on that one day a month."

# 2020 PARTNER LOCATIONS

Bear Creek United Methodist Church  
 Brentwood Baptist Church  
 Brookhollow Baptist Church  
 Champion Forest Baptist Church  
 Chapelwood United Methodist Church  
 Christ Church Sugar Land UMC  
 Christ the Good Shepherd Catholic  
 Clear Lake Presbyterian Church  
 Clear Lake United Methodist Church  
 Congregation Beth Israel  
 Congregation Beth Yeshurun  
 Congregation Emanu El  
 Cypress Bible Church  
 Cypress Creek Christian Church  
 Cypress United Methodist Church  
 Epiphany of the Lord Catholic Church  
 Emmanuel Episcopal Church  
 First Methodist, Conroe  
 First Methodist Humble  
 First United Methodist Church Pearland  
 First United Methodist Katy  
 First United Methodist, Waco  
 Fort Bend Seniors  
 Friendswood United Methodist  
 Grace Presbyterian Church  
 Holy Comforter Lutheran Church  
 Hosanna Lutheran Church  
 Houston's First Baptist Church  
 Kingwood United Methodist Church  
 Klein United Methodist Church  
 Lakewood United Methodist Church  
 Living Word Lutheran Church



Mamie George Community Center  
 Memorial Drive Presbyterian Church  
 Memorial Drive United Methodist Church  
 Messiah Lutheran Church  
 New Faith Church  
 Northwoods Presbyterian Church  
 South Main Baptist Church-Pasadena  
 Spring Branch Presbyterian Church  
 St. Alban's Episcopal Church  
 St. Anne Catholic Church  
 St. Anthony of Padua Catholic  
 St. Cecilia Catholic Community  
 St. Francis Episcopal Church  
 St. Ignatius Loyola Catholic Church  
 St. John the Divine Episcopal Church  
 St. John Vianney Catholic Church  
 St. Martha Catholic Church  
 St. Martin's Episcopal Church  
 St. Paul Lutheran Church  
 St. Paul the Apostle Catholic Church  
 St. Paul's Episcopal Church  
 St. Peter's United Methodist Church  
 St. Rose of Lima Catholic Church  
 St. Stephen's United Methodist Church  
 Tallowood Baptist Church  
 The Woodlands United Methodist Church  
 Trinity East United Methodist Church  
 Trinity Episcopal Church, Baytown  
 Woodlands Community Presbyterian Church  
 Woodlands United Methodist Church  
 Zion Lutheran Church



# 2020 BOARD OF DIRECTORS



**Board Chair** David Jewell, Retired

**Jason Cooper** *President, Arch-Con Construction*

**Keith Crane** *Commercial Development Director, ENGIE Gas & LNG LLC*

**John Del Mixon** *VP, IT SCI*

**James Garrett** *Partner, Vinson & Elkins*

**Karla Heath** *CHI St. Luke's Health - Texas Division, Chief of Staff*

**Steve Hinchman** *President & CEO, Scala Energy*

**Myrzy Lacayo** *Regional Neuroscience Service Line Director, Memorial Hermann*

**Mitch Little** *Marathon Oil Corporation EVP, Operations*

**Linda Lykos** *LL Consulting, Consultant*

**Jenny McCauley** *SVP Administration Southwestern Energy*

**Wright Moody** *Retired, Consultant*

**Dr. Rick Ngo, MD** *General Surgeon*

**Josh Weber** *CEO, Trace Midstream Partners*

**Earl Shelp**, Ph.D. *Emeritus, Co-Founder Interfaith CarePartners*

**Ron Sunderland**, Ed. D. *Emeritus, Co-Founder Interfaith CarePartners*

# 2020 STAFF MEMBERS



**Tommy Breaux\***  
*Vice President & Chief Operating Officer*

*\*Current Interim President*

**Nanci Engle\***  
*Coordinator for Education and Programs*

**Katelin Jordan\***  
*Coordinator for Marketing and Programs*

**Daryan Jones\***  
*Caregiver Education & Digital Specialist*

**Jenna Dhayer**  
*President*

**Monica Holiday**  
*Coordinator*

**Ivan Navarrete**  
*Administrative Manager*

**Debbie Godfrey**  
*Coordinator*

**Karen Pettit**  
*Coordinator*

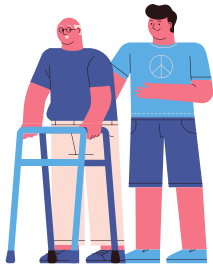
**Gaby Solis**  
*Development/Marketing Director*

**Becky Villarreal**  
*Coordinator*

*\*Current CarePartners Staff*



# JOIN THE CARE MOVEMENT



**VOLUNTEER**



**PARTNER**

**DONATE**



**DONATE**



**MEMORIALIZE**



## CONTACT

**WEBSITE** [www.CarePartnersTexas.org](http://www.CarePartnersTexas.org)

**EMAIL** [info@carepartnerstexas.org](mailto:info@carepartnerstexas.org)

**PHONE** 713.682.5995

