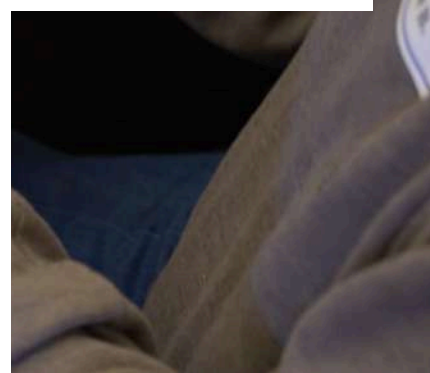
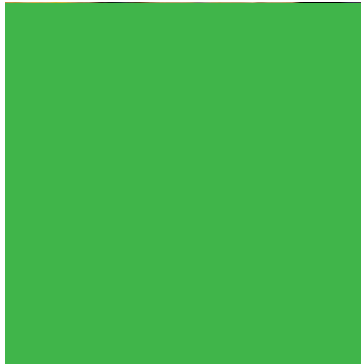




ANNUAL REPORT 2024

Published July 2025



A photograph of two women and a dog. On the left, a woman with white hair and glasses, wearing a blue shirt, holds a small white dog with a red collar. On the right, an older Black woman with grey hair, wearing a grey cardigan over a floral top, sits at a wooden table and reaches out to touch the dog. The background shows a room with wooden floors and a bench.

2,051

**individuals supported through
our programs and services.**

Empowering older adults, individuals
with dementia, and caregivers through
compassionate care, education, and
community connection.

Message from the CEO

I'm honored to present our 2024 Annual Report, a reflection of the extraordinary impact CarePartners has made in the lives of family caregivers and their loved ones. Through cornerstone programs like the Dementia Day Center, Gathering Place, and Caregiver Education, we've touched thousands of lives across Greater Houston.

This year, 1,517 dedicated volunteers gave over 62,097 hours of compassionate care to more than 700 families—a powerful testament to the heart of our mission and the strength of our community.

Thanks to the unwavering support of our donors, volunteers, and partners, we are steadily realizing our vision of creating caring communities. Your generosity and commitment continue to fuel our mission and inspire our work every day.

With heartfelt gratitude,



Katie Scott

KATIE SCOTT

CAREPARTNERS
CHIEF EXECUTIVE OFFICER

Our Mission:

To provide care, education, and support to older adults, including those with dementia, and their family caregivers.

Our Vision:

Creating Compassionate Communities of Care.

Programs and Services

Caregiver Education

Workshops and conferences that provide caregivers with education and community resources to help them take better care of themselves and their loved ones.

Common Ground

Support groups for family caregivers of older adults and individuals with dementia offering emotional support, resources, and self-care tips.

Caregiver Consultation

Ongoing one-on-one support, guidance, and action-planning for family caregivers by trained professionals offered in English and Spanish.

Second Family

An in-home companionship and care coordination program for homebound older adults and individuals living with dementia that combines social support with access to resources.

The Gathering Place

Monthly half-day activity program for individuals with mild to moderate memory loss providing meaningful engagement and socialization.

Dementia Day Center

Licensed Adult Day Center for individuals with mild to late-moderate dementia that provides a variety of unique activities and quality care from specialized staff in a safe, secure, and well-planned environment.

A Family's Journey

"After my mother died and my father first came to live with me, my family and I were confronted with a major change-of-life event. As anyone who cares for someone with dementia knows, finding help and others who understand dementia is not a trivial thing. We have been fortunate to have CarePartners and the Gathering Place system of churches that are gracious enough to open their doors to those with severe dementia. My father very much enjoys the Gathering Place, and the CarePartners personnel and volunteers are amazing. CarePartners helped us to understand dementia better and to care for my father through it all."

—Arturo Vivar Jr.



41

Gathering Place locations
across Greater Houston.

387

sessions offered
throughout the year.





Launch of Spanish Language Care Consultation

In 2024, CarePartners proudly expanded its reach by launching Spanish Language Care Consultation services. This initiative ensures that Spanish-speaking families navigating dementia and caregiving challenges receive culturally sensitive support and guidance in their native language, breaking down barriers to care and fostering inclusivity across communities.

Intergenerational Gathering Place at Rice University

We introduced our first truly intergenerational Gathering Place program at Rice University, bringing together students and older adults in a vibrant, shared space. This innovative model fosters mutual learning, empathy, and connection across generations, enriching the lives of participants while promoting awareness and understanding of dementia care among future leaders.





A Heartfelt Thanks!

Each day, we rush in and out, but we want you to know how profoundly grateful we are for the care you provide our mother. Living with dementia has been an emotional journey, and when we found CarePartners, we were at a loss. You not only helped—you transformed our experience.

Your compassion, patience, and deep understanding of our mom have made all the difference. She is vibrant, funny, and full of life, and your team allows her to remain herself. The support you extend to our family—through kindness, listening, and resources—has been invaluable.

After two and a half years, we cannot imagine this journey without you. Thank you for everything you do!

—Dana McDowelle & Daphne Ingram

86%

of caregivers feel more confident managing their responsibilities due to CarePartners services.

HeART Party

In the spirit of love, CarePartners hosted the 2nd Annual HeART Party on February 17, 2024, transforming the Dementia Day Center into a vibrant space for connection and joy. Families from all CarePartners programs were treated to a day filled with creativity, live music, dancing, and connection.

[Click here to view the photo gallery.](#)

125,343

hours of socialization and respite support brought joy and comfort to CarePartners' families.

Senior Prom

On Saturday, June 8, 2024 CarePartners and Memorial Drive Presbyterian Church hosted the 2nd Annual Senior Prom, creating a day filled with laughter, dancing, delicious food, and pure joy for CarePartners' friends and families.

[Click here to view the photo gallery.](#)



Finding Support Through CarePartners

When Abhinit Bhatt began his caregiving journey, he leaned on his expertise as a physical therapist, but even with his knowledge of community resources, he hadn't yet discovered CarePartners. Caring for his mother, who has dementia, alongside his father, he faced unique challenges—including her regressing to her birth language (Hindi) and experiencing separation anxiety when apart from her husband.

That changed when her doctor introduced them to CarePartners. Initially hesitant, Abhinit and his family toured the Dementia Day Center and the experience exceeded their expectations. His mother is now a regular participant, attending twice a week, finding joy and comfort in the community.

CarePartners' impact has extended beyond his mother's care. Abhinit now shares his physical therapy expertise in our virtual support meetings, helping fellow caregivers navigate their roles. His father, the primary caregiver, also has attended our educational workshop on Alzheimer's behaviors, actively engaging and offering positive feedback to the presenter.

The Bhatt family's ongoing involvement reflects the power of connection, education, and compassionate care. They are a testament to how CarePartners transforms lives—not just for those we serve, but for the families who walk this journey together.



Expansion across Fort Bend County

As one of the inaugural recipients of the Alzheimer's Association's Center for Dementia Respite Innovation grant project, CarePartners began laying the groundwork for expansion across Fort Bend County. This strategic planning marks a pivotal step in our mission to bring high-quality dementia care and support services to more families across the Greater Houston area.



Expanding Dementia Care to the IDD Community

CarePartners made significant strides in making dementia care more accessible to individuals with intellectual and developmental disabilities (IDD). Through targeted professional training and a meaningful partnership with the Alzheimer's Association, we equipped caregivers and professionals with the tools to provide compassionate, specialized support to this often-overlooked population.

Giving, Serving, and Sharing Joy



"Volunteering with CarePartners made my faith stronger and let me use my talent that the Lord has given me. Just hosting a Gathering and seeing the smiles when they come and being able to mingle among the participants is very rewarding.

Seeing what CarePartners has done for so many people has moved me to donate to and give to CarePartners. Seeing all the different Gathering Places across Houston and the impact they have on families is another reason I donate."

—Delores Muske

Volunteer Engagement in the Virtual Dementia Experience

In a powerful demonstration of our commitment to dementia education, CarePartners volunteers participated in the Virtual Dementia Experience.

This immersive training deepened their understanding of the challenges faced by those living with dementia, reinforcing our organization's expertise and dedication to empathetic, informed caregiving.

368

families participated in the Gathering Place program.

103

families supported at our Dementia Day Center.

Derby Invitational

The Derby Invitational, our annual fundraising event held since 2018, took place on Saturday, May 2, 2024, at Yellow Rose Distilling. This year's celebration brought together dedicated supporters for an unforgettable evening, raising a total of \$114,935.

Difference Makers

On October 1, 2024 we celebrated the extraordinary contributions of our Difference Makers, whose commitment and service have significantly advanced CarePartners' mission.

Partner of the Year Award

We recognized the **Southeast Texas Geriatric Workforce Enhancement Program (GWEP)** as our 2024 Partner of the Year for its leadership in advancing care for vulnerable older adults across the health care community.

[Click here to watch the video.](#)

Dr. Ronald H. Sunderland Volunteer of the Year Award

CarePartners proudly honored **Janie Neighbors**, a founding member of the Gathering Place Care Team at Houston's First Baptist Church.

[Click here to watch the video.](#)

Sustaining Presence

For over 30 years, **Memorial Drive Presbyterian Church (MDPC)** has been a vital mission partner, program host, and benefactor, fostering communities of care and making a lasting impact on Houston's most vulnerable populations.

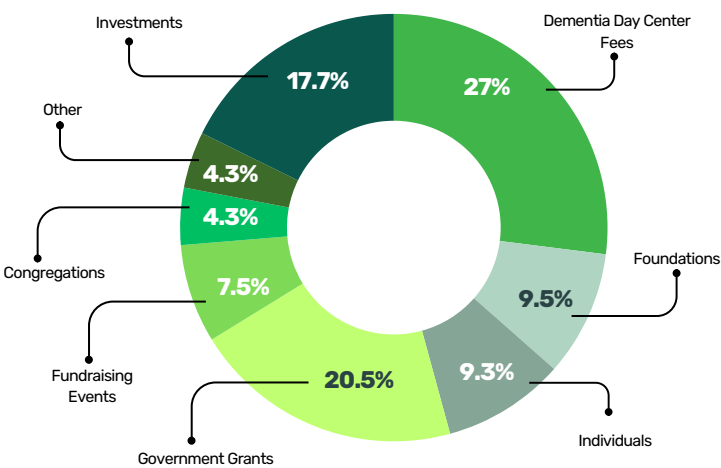
[Click here to watch the video.](#)



Financial Report

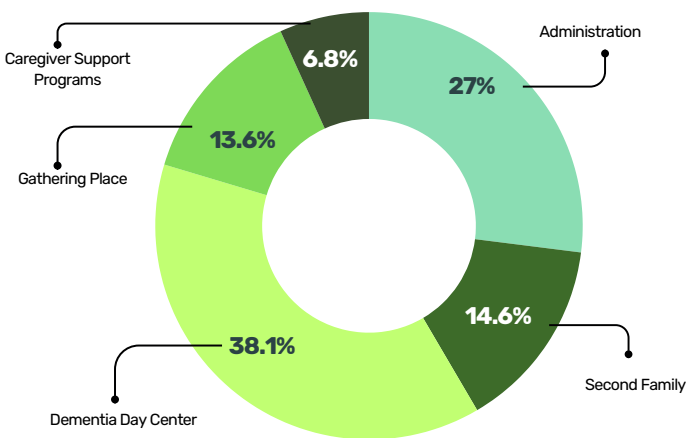


2024 REVENUE



Want to see how your support made a difference?
[View our full financial statements here.](#)

2024 EXPENSES



Thank you, Donors

Your Donation Supports Houston Families

Every dollar you give helps CarePartners provide free programs like The Gathering Place for individuals with memory loss, caregiver support groups, volunteer companionship for older adults, and essential caregiver coaching and education. Your generosity also funds scholarships for families needing financial assistance to attend our Dementia Day Center—ensuring no one is turned away from care.

FOUNDATIONS

Albert and Ethel Herzstein Charitable Foundation
Bright Funds
Harriet and Joe Foster Foundation
Matching Gift Programs ExxonMobil Foundation
May and Stanley Smith Charitable Trust
Mixon Family Charitable Fund
Shell Oil Company Foundation
Strake Foundation
The Agarwal-Sowell Family Fund
The Brown Foundation, Inc.
The CBJR Foundation
The Don and Colletta McMillian Foundation
The Fred and Mabel R. Parks Foundation
The George and Mary Josephine Hamman Foundation
The Greater Houston Golf Charity
The Harry S. and Isabel C. Cameron Foundation
The Hildebrand Foundation
The Huffington Foundation
The Isla Carroll Turner Friendship Trust
The Jack and Annis Bowen Foundation
The John P. McGovern Foundation
The Knox Foundation
The Medallion Foundation Inc.
The Richard D. Huff Foundation Trust
The Staats Shepard Gift Fund
Virginia Clark Charitable Giving Fund

COMPANIES & ORGANIZATIONS

AAA Awning Co., Inc.
Belmont Village
Donna Company
ENGIE North America
GL&L Holdings, LLC.
Phillips 66
Service Corporation International
The Guild Shop of St. John the Divine

CHURCHES & FAITH COMMUNITIES


Chapelwood United Methodist Church Foundation
Christ the King Lutheran Church
First Methodist Conroe in memory of Donald P. Harlan
Memorial Drive Presbyterian Church
Northwoods Presbyterian Church
South Main Baptist Church-Pasadena
Spring Branch Presbyterian Church
St. Francis Episcopal Church
The Woodlands Community Presbyterian Church

INDIVIDUALS

Aanand Naik
Anita Mueller
Anita Woods
Barbara Martin, in memory of Greg Martin
Bob & Latricia Giroir
Bob Heckel
Brian Week

Cara Westerman
Carol Kriegel
Charles Rawl, in honor of Bill and Nancy Rawl
Chris Borreca, in honor of Dr. Frank Borreca
Christian Cajavilca
Cindy Williams
Daniel Kent
David Jewell
Debra Crabtree, in memory of James McGraw
Erin Stetzer Homes, in memory of Walt Bish
Frank Ingaham, in honor of Dr. Cynthia Williams
Graciela Martinez
Greg Miller
Helen Gebhard, in memory of Joanna Sharkey
James and Lindsay Garrett
Jane McCourt
Jane Shepard
Jason Cooper
Jeff and Brenna Taylor - Schwab DAF, in memory of Richard "Rick" Smith
Jennifer Brice, in memory of Mrs. Lorna Brice
Jennifer Grosvenor
Jennifer Legalos
Jenny Midyat, in memory of Regina Johnson's Mother
Jim McGaha
Jo Anderson, in memory of Bob Lee.
John Olson
Jonathan Eshak, in memory of Rick Smith
Jonathon Frampton, in memory of Rick Smith
Judith Landreneau
Kyle Zandy
L Lee Wong

Lauri Laufman, in honor of Kathy Tellepsen
Leslie Muir, in memory of Raymond Leslie Rose, Jr.
Leslie Sullivan, in honor of Nancy and Bill Rawl
Lillie and Ben Hurwitz, in honor of Jackie and David Janco and Family
Lisa Elliott
Mark & Janice Gibbons, in memory of Frank Gibbons
Mary Wagner
Matt & Kelsey Falcone
Melanie Brown
Melba Breed
Mikey Newton
Ming Sung
Morgan Lee, in memory of Jean Lim
Namkee Choi
Nancy Wilson
Regina Johnson
Rhonda Rodriguez, in memory of Bob Lee
Richard Kammerman
Richard Kirsten
Ron (Tino) DePetrus
Roni Cappadonna Family
Sandra Collins, in memory of Levora Bobb, Henry and Ethel Colar
Stephen Blackmore
Stephen MaGee, in honor of Cynthia Williams Ware
Susan Richardson
Suzanne Wernette, in honor of Larry Dunn
Syed Rizvi
Tammy Davis
Theresa Rooney
Tommy & Susan Stone
Trudy Gaw, in memory of Jean Lim
Velma Rice
William Bedell, in memory of James McGraw
William Rawl
Wright Moody

A woman with long dark hair is leaning over a table, focused on a craft project. She is wearing a blue long-sleeved shirt. A young child with dark hair, wearing a blue and white star-patterned shirt, is also at the table, looking down at the project. They are surrounded by various craft supplies like paper, glue, and scissors. The entire scene is overlaid with a semi-transparent orange filter. Two vertical white lines are positioned on either side of the main text block.

Be a part of our
mission to bring
joy, comfort, and
dignity to those
who need it most.

**Become a donor
today!**

CarePartnersTexas.org/Donate



2025 BOARD OF DIRECTORS

Chair, Jenny McCauley
Vice Chair, Jennifer Patton Grosvenor
Treasurer, Roni Cappadonna
Secretary, James M. Garrett

Emeritus
Earl Shelp, PhD, *Co-Founder*
Ronald H. Sunderland, EdD, *Co-Founder*

Molly Boyd
Keith A. Crane
Matthew Falcone
Sarah Hoelzen
Regina Johnson
John Del Mixon
Wright Moody
Susan Richardson
Thomas Riley

[CarePartnersTexas.org](https://carepartners-texas.org)

    @CarePartnersTexas